

Remembrance Wreath

During The Great War two of the largest training camps for soldiers in the UK were built near Rugeley and Brocton. RAF Hednesford was built to train service people for WWII. Poppies are often used to remember those who died in wars, because of the poppies that grew on some of the battlefields after the fighting.



You will need:

A circle of card - you could use a paper plate. We used the disc from under an oven ready pizza!

Red and black tissue paper

Scissors

Glue

Needle and thread if you want to sew your petals together.

First, fold your cardboard disc in half. Cut a semi circle from the middle. Ask an adult to help you, if you need to.

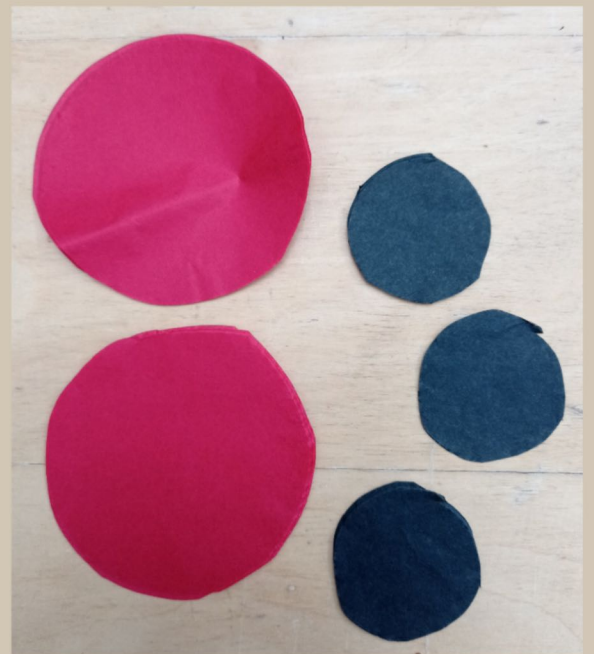
The outside circle will now open out into a ring.



Cut some circles from the black tissue paper. They need to be about the same size as a 10p.

For each black circle, you will need to cut out 3 to 5 red circles. These need to be twice the size of the black circles.

Ask an adult for help if you need to!



Next, you need to spread the red circles out and join them together with a black circle in the middle.

You can glue them, or, if you know how to sew, you can sew a cross shape in the centre to attach them together.

When the tissue paper petals are joined together, squeeze them in your hand like this.

This will crumple the tissue and make the petals look more realistic.



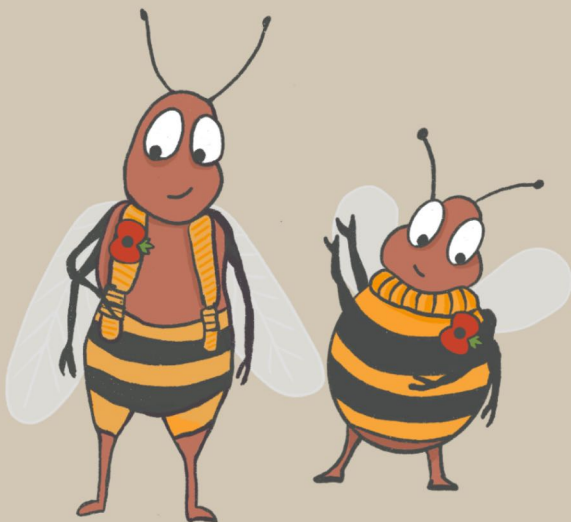


As you make each Poppy, glue it on to the cardboard circle.

It looks very effective if some of the poppies overlap each other.

When all of the circle is covered in poppies, you might want to attach your wreath to a wall or door with sticky tack, or a pin.

If you are going on a Remembrance Day parade, you could take your wreath to leave on a memorial.



You might want to visit the Cannock Chase War Cemetery and the German Military Cemetery to help understand why people take part in Remembrance Day.